



E N G I N E E R I N G

ASPIRATIONS ENGINEERED





A growing engineering consultancy that engineers love, rising to the evolving challenges of the development and construction industry.

OUR AIM

To provide our clients with consistent and cost-effective engineering solutions through proactive design and technical expertise.

OUR VALUES



SMART

We are proud to be engineers; we work intelligently and effectively.



TRUST

We are honest, hardworking, dependable and factual.



CARE

We genuinely care. The environment and the health and wellbeing of our team and clients matter to us.



GROWTH

We prioritise education and knowledge, dedicating ourselves to the ongoing development of our business

OUR SERVICES

As a well-respected specialist multi-disciplinary engineering consultancy, we offer a variety of expert services at all points of a project life cycle.



OUR SENIOR TEAM

We are proud of our team's wealth of experience and technical skill, all underpinned by a passion for engineering.



NICK
MOORE

MEng (Hons) CEng MICE



ROBERT
GILL

MEng (Hons) CEng MICE



CHRIS
HADJIVASSILIOU

CEng (Hons) MICE



NEIL
SHUTTLEWORTH

MEng (Hons) CEng MICE



ALAN
YAN

CEng MICE C.WEM MCIWEM MCIHT



JESSICA
MOORE

BA (Hons) MCIPTD



NICK
HIRSCHMAN

BSc (Hons) CEng MIStructE



DOMINIC
HARDY

MEng CEng MIStructE



OUR TRACK RECORD

Our clients particularly value the technical expertise we apply to engineering solutions.



NEEDWOOD, BURTON ON TRENT

THREE LIONS YARD AT ST GEORGE'S PARK

The FA engaged Link Engineering to provide structural and civil engineering services for the construction of Three Lions Yard at St George's Park, Burton on Trent. The project encompassed a new storage facility, access infrastructure, parking and service yard. Link Engineering was involved from the initial scoping phase through to planning and on-site delivery.

Our work included:

1. Private drainage design to building regulations, including attenuation.
2. Design of all substructure elements (excluding warehouse slab).
3. Earthworks design and specification.

SUTTON COLDFIELD

THE BELFRY HOTEL & RESORT

Working for the construction company Vinci, along with multiple designers, supply chain and project teams, Link supported the design and construction works of a new ballroom and accommodation block opposite the eighteenth hole of the Belfry's world class Brabazon golf course.

The project is targeting a BREEAM Excellent rating.





HERTFORDSHIRE

MAX 50

Pigeon appointed Link to support their planning application for a 50,000 sq ft industrial unit situated close to the M25 at Waltham Cross, Cheshunt, Hertfordshire.

The site is seen as important for local and regional economic growth and is predicted to generate over £4.0m in social impact, mainly through the provision of local jobs and environmental commitments.

1. FRA and Sustainable Drainage Strategy to support the planning application.
2. Detailed Civil and Structural Engineering design to support tender and construction.
3. Foundation design.

ANDOVER

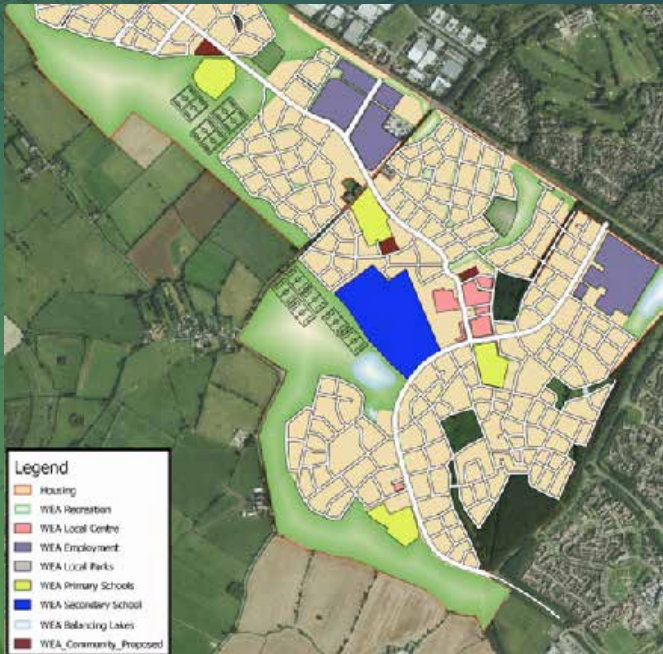
SITE DEVELOPMENT OF A NEW MANUFACTURING FACILITY

We were instructed to provide civil and structural engineering design for the development of a new manufacturing facility more than 2.5x the size of Stannah's existing facility.

Our engineers worked on the scheme from the master planning stage of the proposals. We undertook multiple tasks including:

1. Full review of the existing site, focusing on site constraints and production of flood risk assessment.
2. Regular engagement with the operational team to ensure designs met their plant specifications.
3. Considerations for levels, external works, drainage, foundations, build specifications and more.





MILTON KEYNES

MULTI-PURPOSE WESTERN EXPANSION AREA DEVELOPMENT

We were appointed to design the strategic infrastructure to support the delivery of the Western Expansion Area in Milton Keynes. The work included the design of roads and drainage infrastructure to support the delivery of 1,500 homes, a primary school and community facilities. Our services on this project included:

1. Section 38 and 278 highway design, along with Section 98 and 104 drainage design.
2. Legal plans, service coordination and protection plans and designer's risk assessments.
3. Earthworks, Signage, Pavements, Kerbing, Structural AIPs and land drainage.

FELIXSTOWE

COMMERCIAL DEVELOPMENT INCLUDING 1MSQFT LOGISTICS SPACE

We were instructed to provide pre-acquisition support and due diligence for a proposed development which included over 1Msqft B8 logistics space. The team were commissioned to provide engineering and primary infrastructure services to support the S278 access improvements on the A14. The scope of our work included:

1. Site appraisal to identify risk and cost elements concerning access, S278 works and highways.
2. Detailed highways design for the A14 junction improvements, based on CD123 of the DMRB.
3. Detailed design of the site roundabout in compliance with CD116 of the DMRB.



WHO WE WORK WITH





WORKING WITH LINK

CLIENT TESTIMONIALS



I must say it's been a pleasure working with Link, you've made the Kingswinford S278 process pain free, I've been impressed with the level of communication and proactive nature you've applied to chasing the highway authority.

Craig Schofield
Traffic Engineering Manager,
Gloucestershire County Council

Link Engineering offer a wealth of technical knowledge, and we find them very responsive to any design changes or unexpected issues as they arise on site. We have enjoyed a close working relationship with Link Engineering for a number of years now, and they are a key part of our business



Reece Williamson
Senior Development Co-ordinator,
Lovell

FLOW

A UNIQUE WAY OF WORKING AT LINK



PROFESSIONAL DEVELOPMENT

We dedicate time to help the team obtain formal recognition of their professional achievements and our senior team participate in formal business coaching to develop our business.



LINK LUNCH LEARNS

Each month our team gets around a table to discuss a different topic, whether it be recent projects, new regulations or tricky issues.



MONTHLY TEAM 1:1S

All team members are assigned a line manager, who is responsible for their well-being, development and performance against annual personal key performance indicators.



REVIEW

Before work is issued, a thorough assessment by another team member takes place to ensure it's technically sound and tailored to the specific needs of our clients.



WORKFLOWS

Very simply, we have created guides, videos, and road maps for pretty much everything we do so that we can deliver smartly and consistently.

BENEFITS OF WORKING WITH LINK

1. Working with **Link** means you maximise the benefits of a growing business:
 - Responsiveness
 - Flexibility
 - A close working team
 - A leadership team which is close to delivery

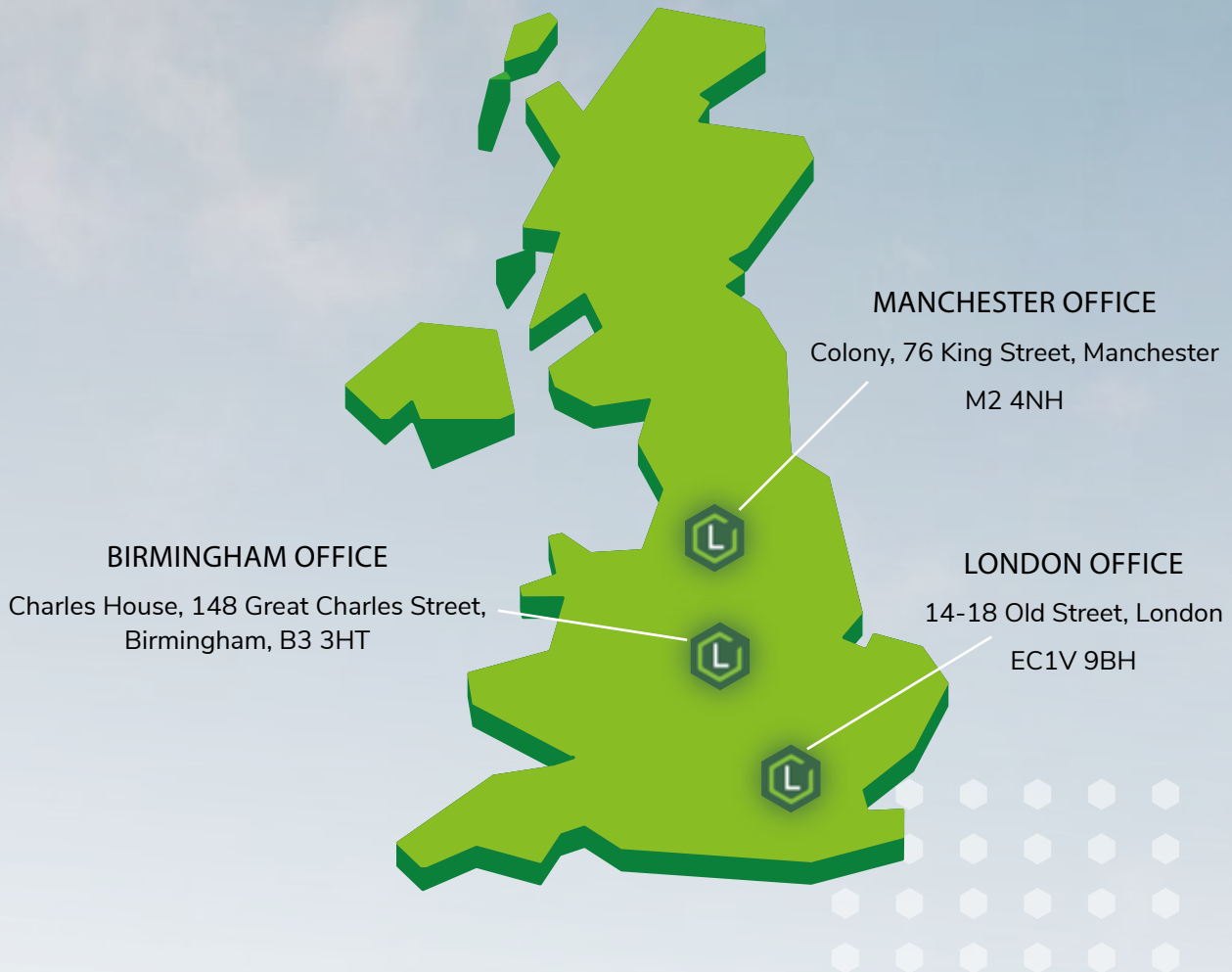
In our specialist area of private sector development and infrastructure, we have a well-established and strong team, capable of handling schemes of any scale and complexity.

2. We offer a detailed understanding of the whole life cycle of a project, not just the approval stage. Our team has extensive experience of working with water companies, highway authorities and local authorities. We have developed audit trail trackers and pre-start forms as a means of fostering progress with authorities.
3. Due to the variety of our services we offer, we have an extensive supply chain of subject matter experts including hydrology, transport, air and noise quality, traffic signalling, lighting design, bridge design and geo environmental. We collaborate with them to deliver to our clients' needs.



LOCATIONS

WORKING ACROSS THE UK





MANCHESTER OFFICE

Colony
76 King Street
Manchester
M2 4NH

BIRMINGHAM OFFICE

Charles House
148 Great Charles Street
Birmingham
B3 3HT



LONDON OFFICE

14-18 Old Street
London
EC1V 9BH

We're always happy to have an initial chat about your needs, whether you have a project you'd like some advice on, or you're looking for a career opportunity with us. Please get in touch and a member of our senior management team will contact you.



linkeng.co.uk



0121 716 0100



mail@linkeng.co.uk

GET IN TOUCH
GET IN TOUCH
GET IN TOUCH



MAIL@LINKENG.CO.UK

WWW.LINKENG.CO.UK